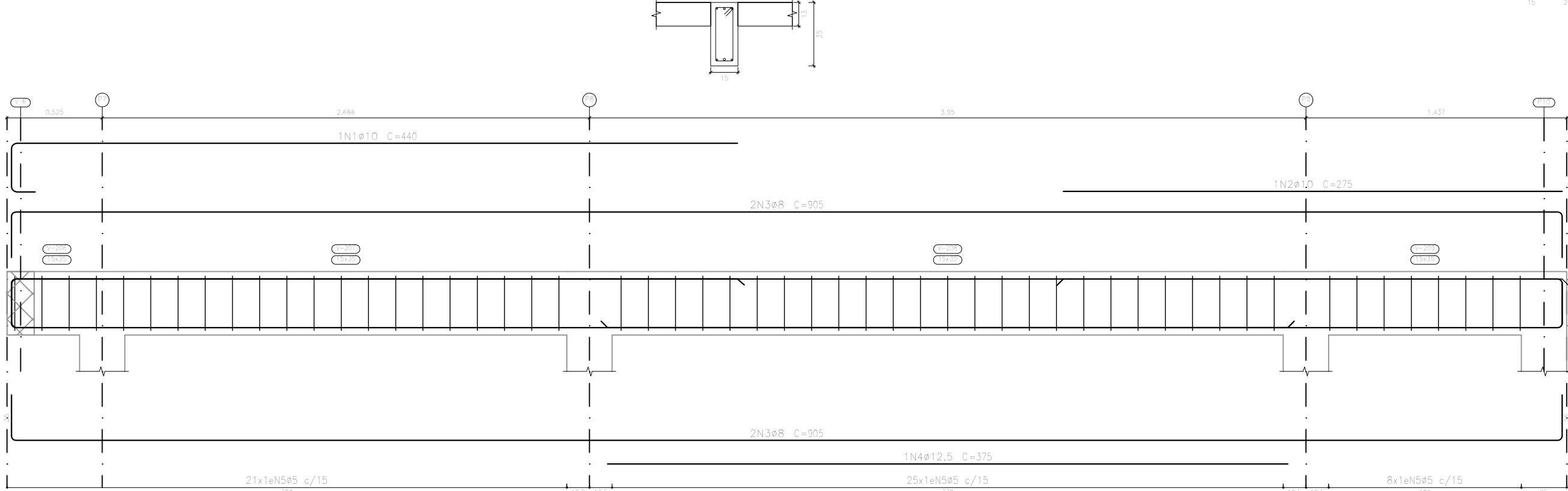


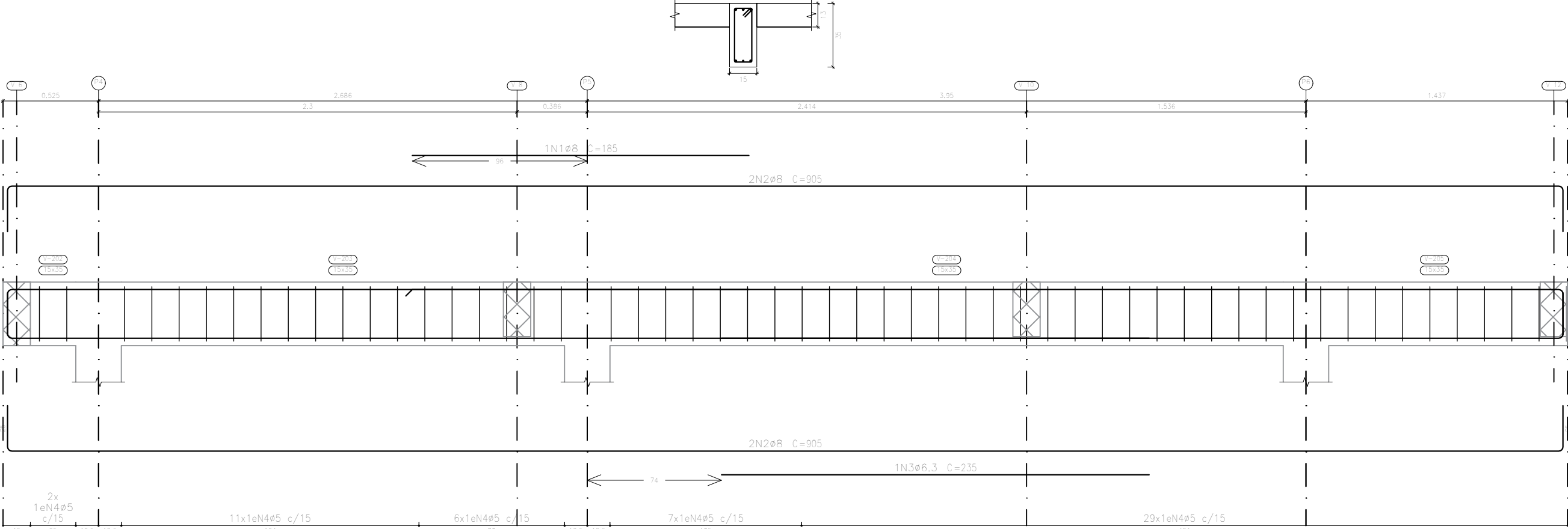
Cobertura  
Desenho de vigas  
Concreto: C25, em geral  
Aço das barras: CA-50 e CA-60  
Aço dos estribos: CA-50 e CA-60  
Escala vigas 1:20  
Escala seções 1:20  
Escala aberturas 1:20

Resumo Aço	Comp. total	Peso+10%	Total
Desenho de vigas	(m)	(kg)	
CA-50	ø6,3	23,9	6
	ø8	266,4	116
	ø10	7,2	5
	ø12,5	6,1	6
CA-60	ø5	311,1	54
Total			187

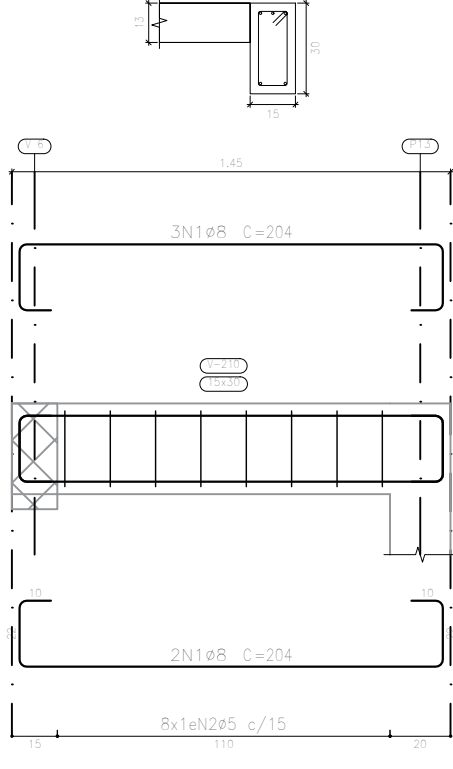
V 3



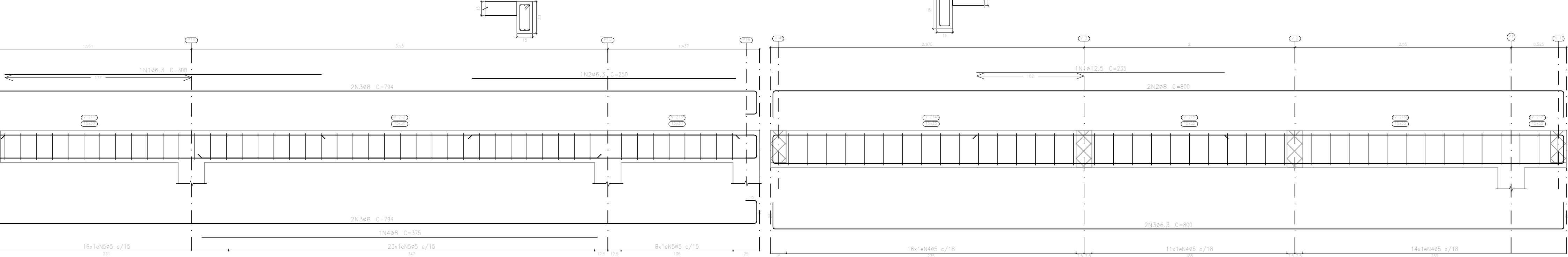
V 2



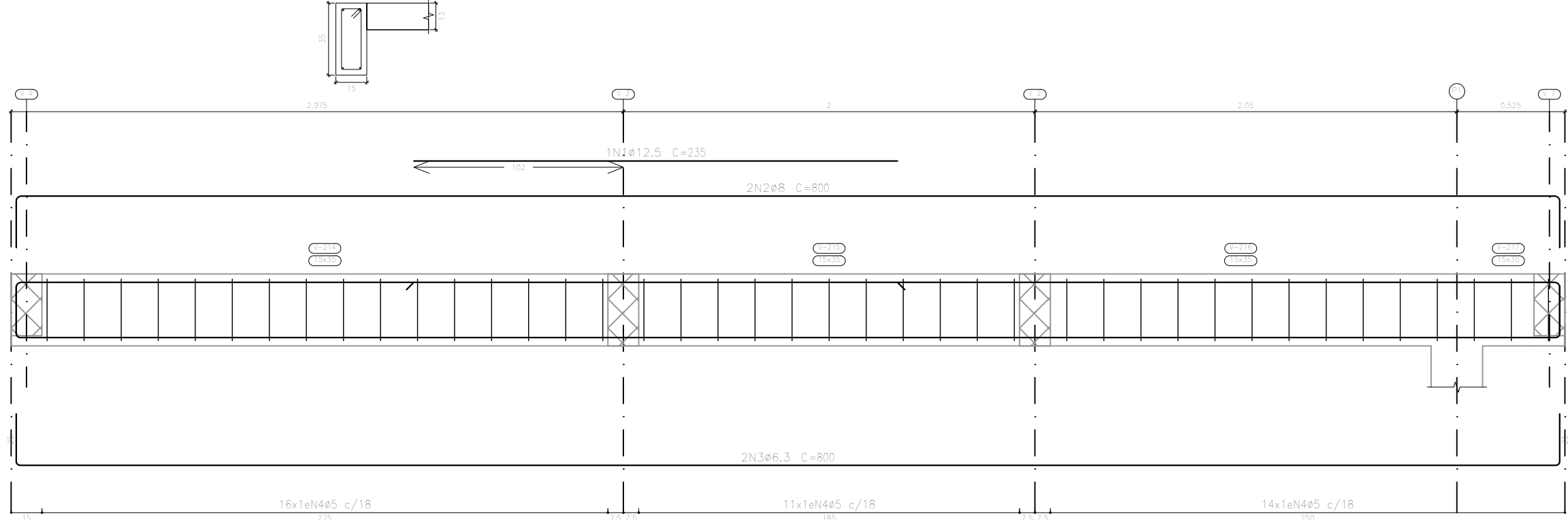
V 4



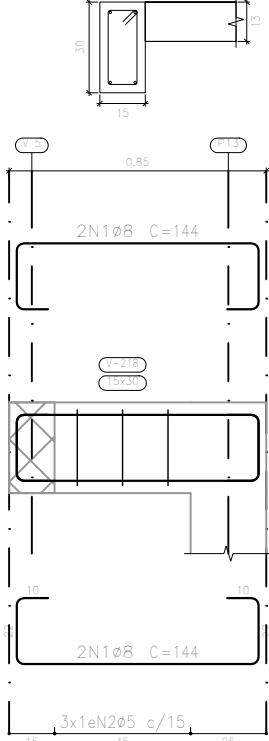
V 5



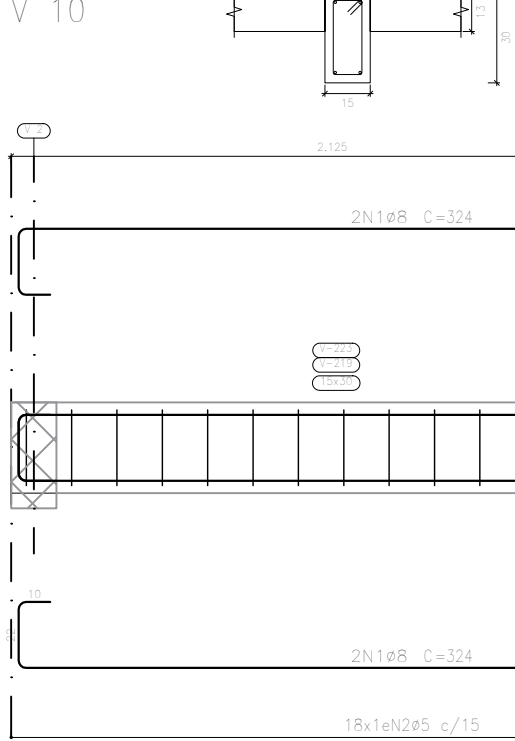
V 6



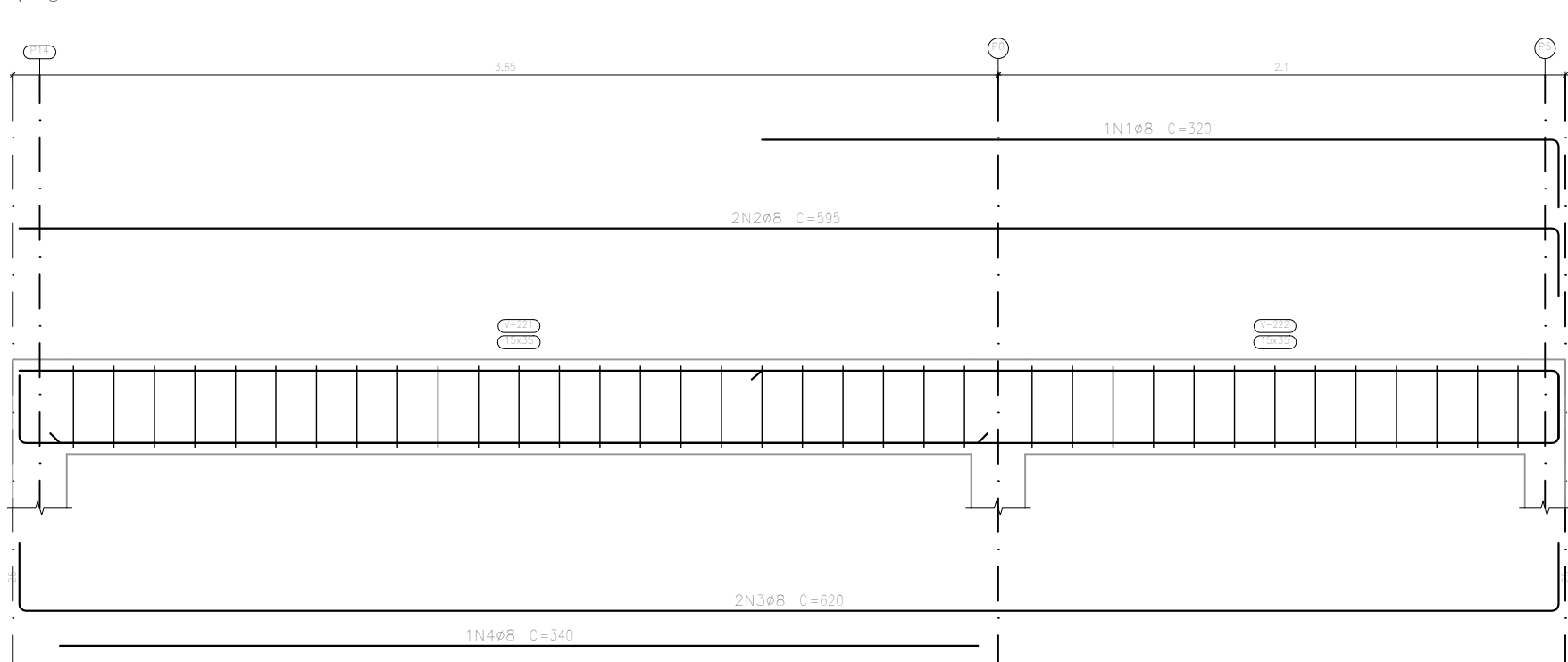
V 7



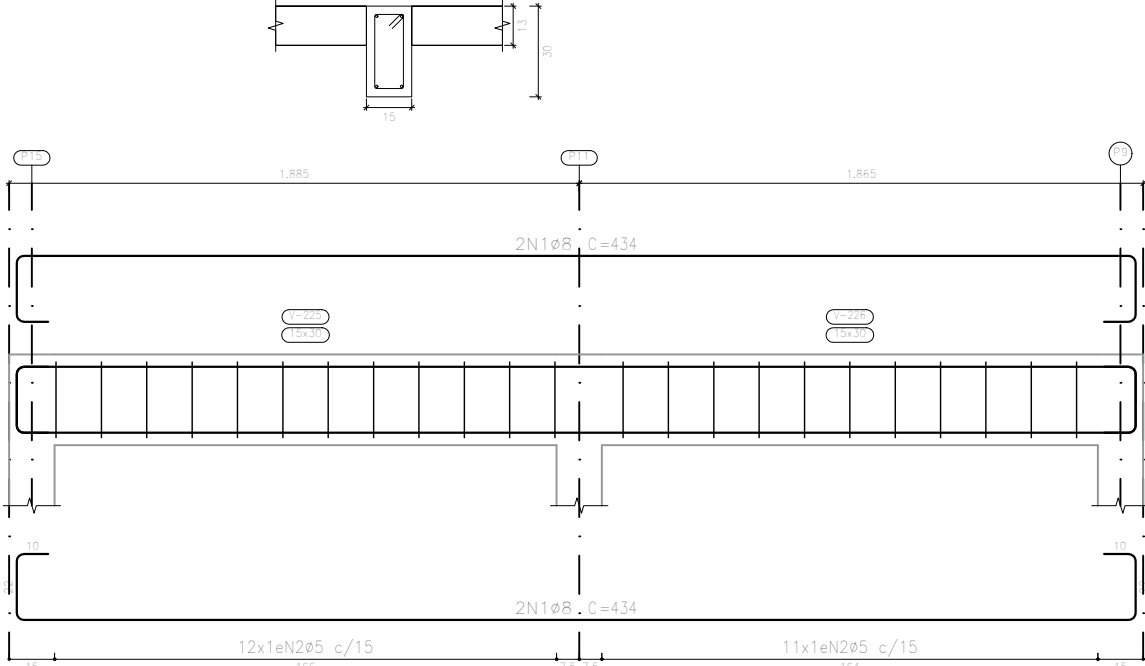
V 8



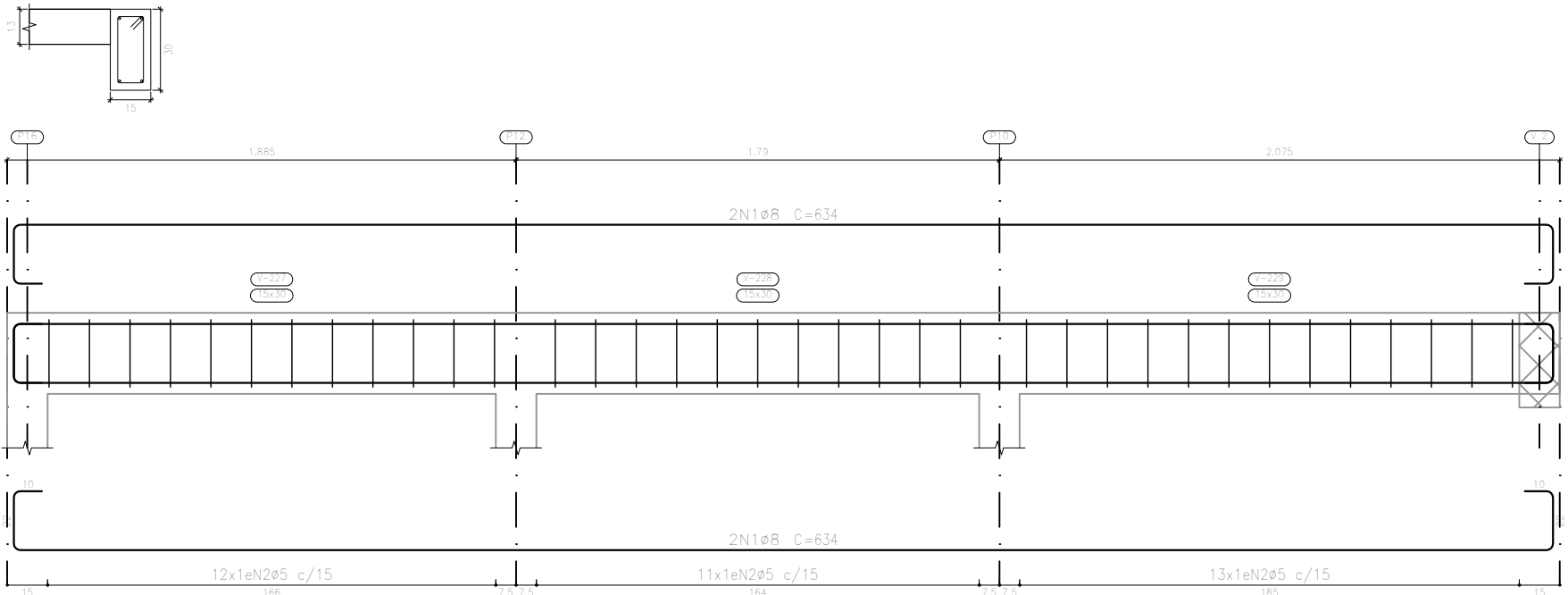
V 9



V 11



V 12



Elemento	Pos.	Diam.	Q.	Esquema (cm)	Comp. (cm)	Comp. Total (kg)	CA-50 (kg)	CA-60 (kg)
V 1	1	ø8	4		820	2516	9,3	
	2	ø5	36					4,4
					Total+10%	10,3	4,8	
V 2	1	ø8	1		185	185	0,7	
	2	ø8	4		905	3620	14,3	
	3	ø6,3	1		235	235	0,8	
	4	ø5	55			88	4840	7,6
					Total+10%	17,2	8,4	
V 3	1	ø10	1		440	440	2,7	
	2	ø10	1		275	275	1,7	
	3	ø8	4		905	3620	14,3	
	4	ø12,5	1		375	375	5,6	
	5	ø5	54			88	4752	7,5
					Total+10%	24,5	8,3	
V 11	1	ø8	4		824	7736	9,9	
	2	ø5	23			78	1794	2,8
					Total+10%	7,8	3,1	
V 12	1	ø8	4		824	2536	10,0	
	2	ø5	36			78	2808	4,4
					Total+10%	11,0	4,8	
V 9	1	ø8	1		320	320	1,3	
	2	ø8	2		555	1190	4,7	
	3	ø8	2		820	1240	4,9	
	4	ø8	1		340	340	1,3	
	5	ø5	36			88	3168	5,0
					Total+10%	13,4	5,5	
V 8	1	ø12,5	1		235	235	2,3	
	2	ø8	2		800	1600	6,3	
	3	ø6,3	2		800	1600	5,9	
	4	ø5	41			88	3608	5,7
					Total+10%	13,8	6,3	
V 5	1	ø6,3	1		300	300	0,7	
	2	ø6,3	1		250	250	0,6	
	3	ø8	4		754	3176	12,5	
	4	ø8	1		375	375	1,5	
	5	ø5	47			78	3666	5,8
					Total+10%	16,8	8,4	
V 7	1	ø8	4		144	576	2,3	
	2	ø5	3			78	234	0,4
					Total+10%	2,5	0,4	
V 4	1	ø8	5		204	1020	4,0	
	2	ø5	8			78	624	1,0
					Total+10%	4,4	1,1	
V 8+V 10	1	ø8	4		324	1296	5,1	
	2	ø5	18			78	1404	2,2
					Total+10%	5,6	2,4	
					(42)	11,2	3,3	
					ø6,3	6,4	0,0	
					ø8	15,7	0,0	
					ø10	4,8	0,0	
					ø12,5	6,4	0,0	
					Total	55,3	53,8	



Estado do Rio Grande do Sul  
**MUNICÍPIO DE SÃO MARTINHO**  
CNPJ 07.613.097/0001-96

CONTEÚDO:  
Detalhamento de Vigas -  
Cobertura

ENDEREÇO:  
Av Geert Lorenz, nº 1404,  
Centro, São Martinho - RS

Proprietário:

Jeancarlo Hunhoff  
Prefeito Municipal

Responsável Técnico:

Ismael A. Faggon - Engenheiro Civil  
CREA-RS 231384

Escala:

1:25

Área:

62,81 m²

Data:

Mar/2022

Desenho:

Ismael

Prancha:

10/13